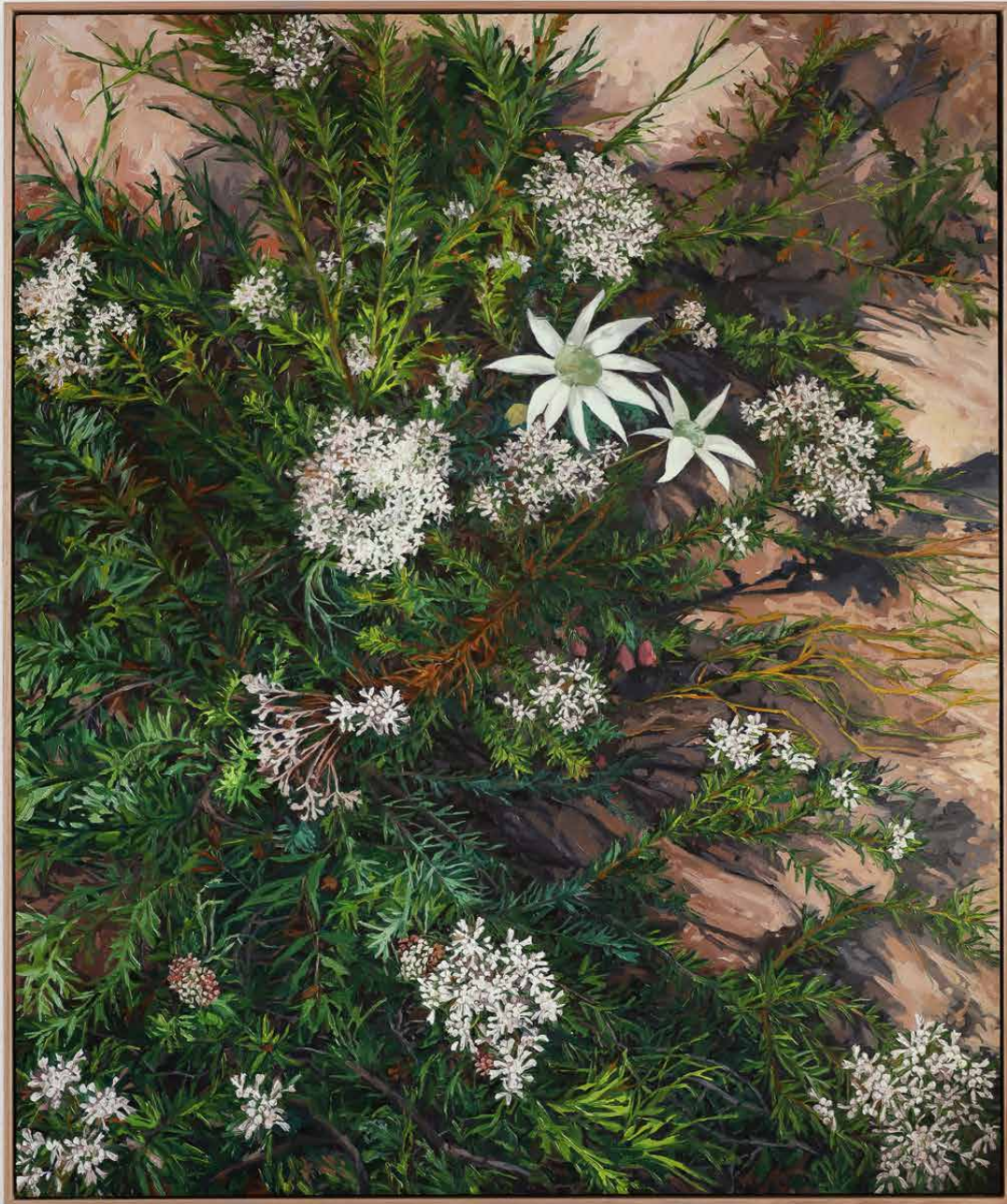


MICHAEL REID

S . H I G H L A N D S





Louise Frith
Mountain Made 2026
oil on board
85 x 105 cm, framed
\$5,600



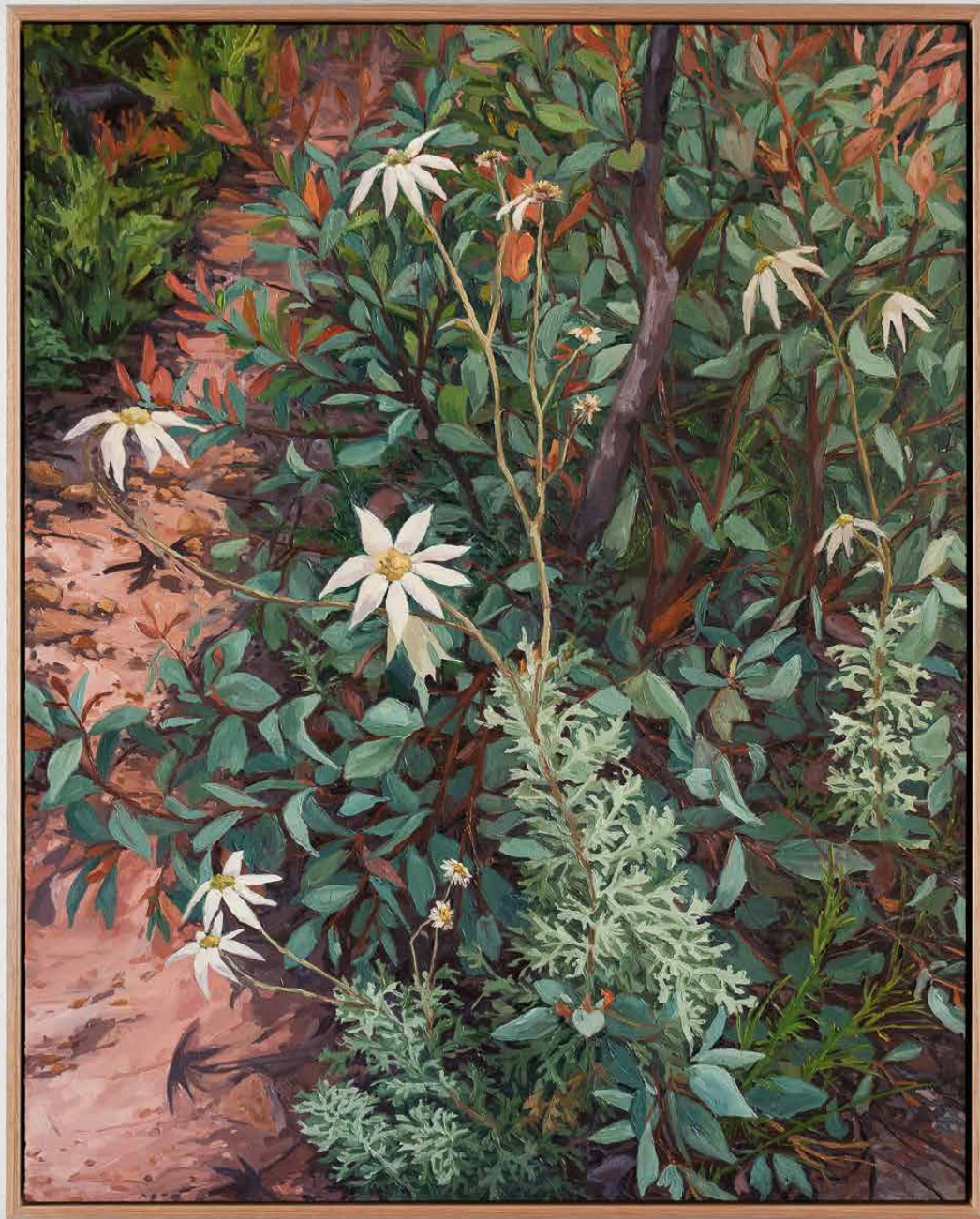
Louise Frith
Cleave 2026
oil on board
57 x 73 cm, framed
\$3,600





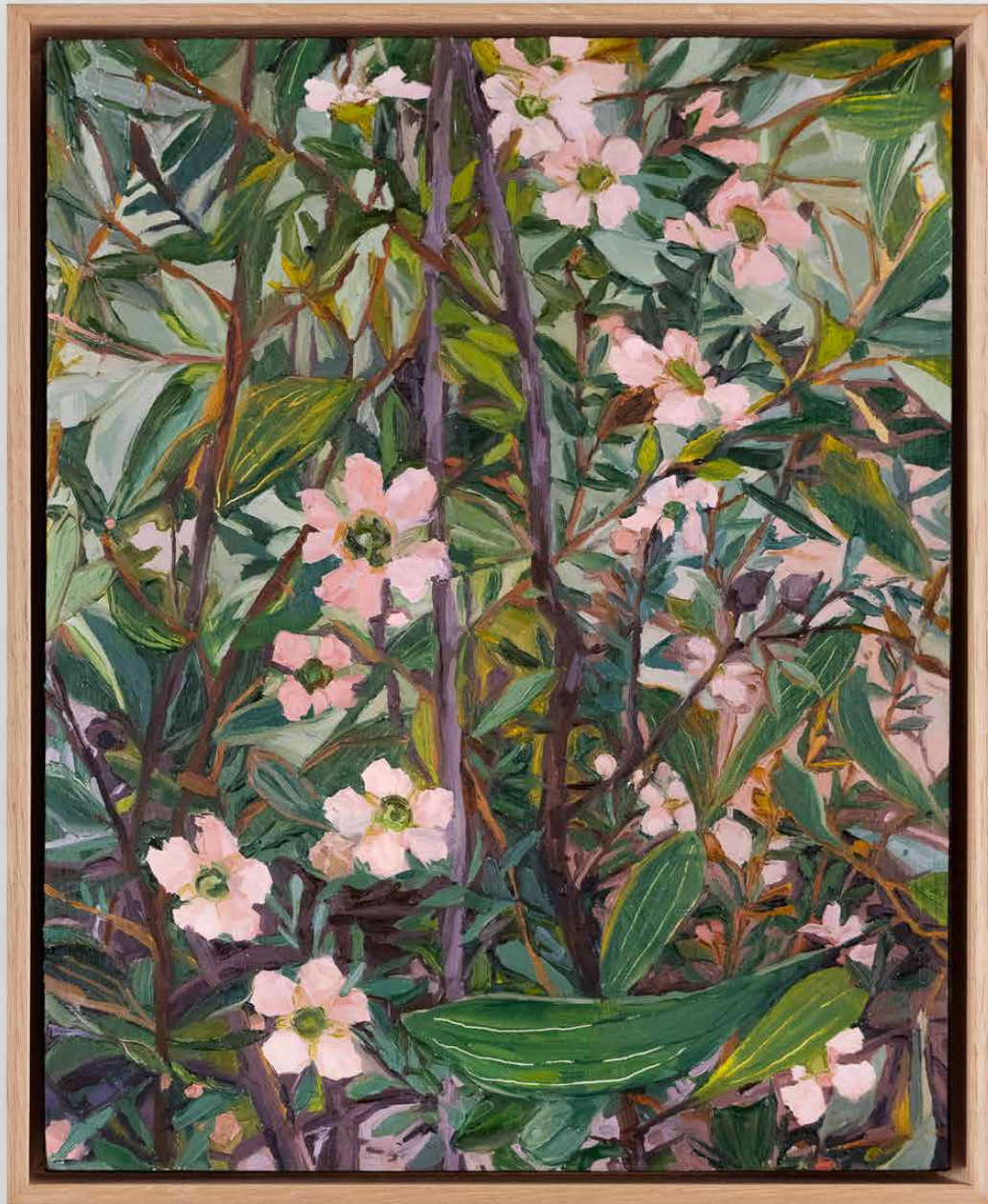
Louise Frith
Following the Call 2026
oil on board
95 x 105 cm, framed
\$6,200





Louise Frith
From the Ashes 2026
oil on board
57 × 73 cm, framed
\$3,600





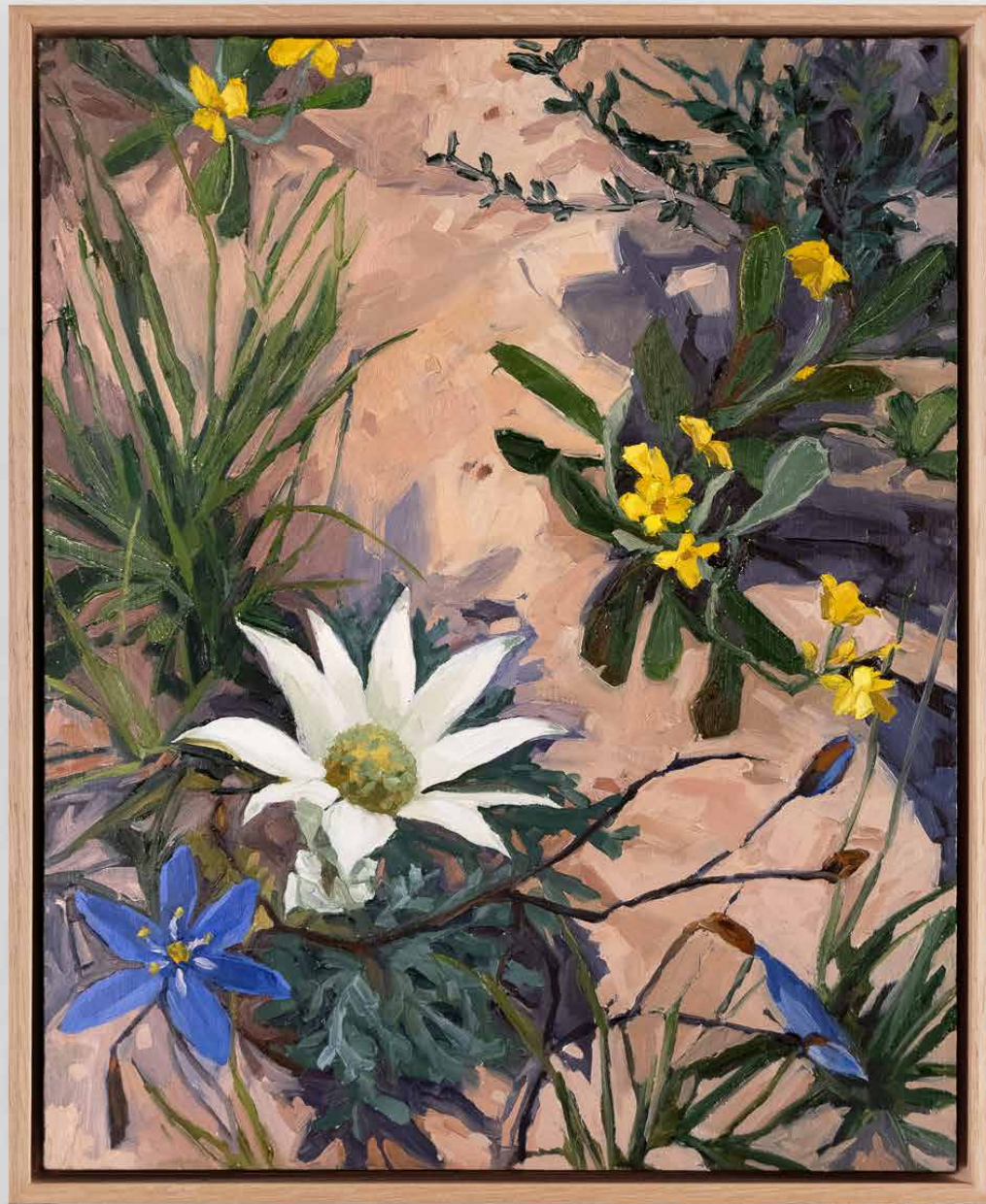
Louise Frith
Teatree Tangle 2026
oil on board
32.5 x 25 cm, framed
\$1,400



Louise Frith
Sun Soaked 2026
oil on board
57 x 73 cm, framed
\$3,600







Louise Frith
Between the Cracks 2026
oil on board
32.5 x 25 cm, framed
\$1,400

Pierce's Pass was burnt in the 2020 bushfires. People commented that after the burn no birds or insects could be heard, however if you visit over summer now the landscape is thriving and the thrum of cicadas is deafening. It is full of life again.

Most people are enthralled by the big views, looking down the valleys, marvelling at the escarpment, but I'm charmed by the details at my feet. How life begins between the cracks in the sandstone or competes for light under a canopy, or the heath that has been buffeted by the wind. It's about resilience and regeneration.

- Louise Frith, 2026

MICHAEL REID

S . H I G H L A N D S

11b Old Hume Highway

Berrima NSW 2577

+61 (02) 8353 3535

southernhighlands@michaelreid.com.au

Monday - Saturday 10am - 5pm

Sunday 10am - 4pm

Michael Reid Southern Highlands acknowledges the Gundungurra and Tharawal people as the Traditional Custodians of the area now known as The Southern Highlands. We pay our respect to Indigenous Elders past, present and emerging.