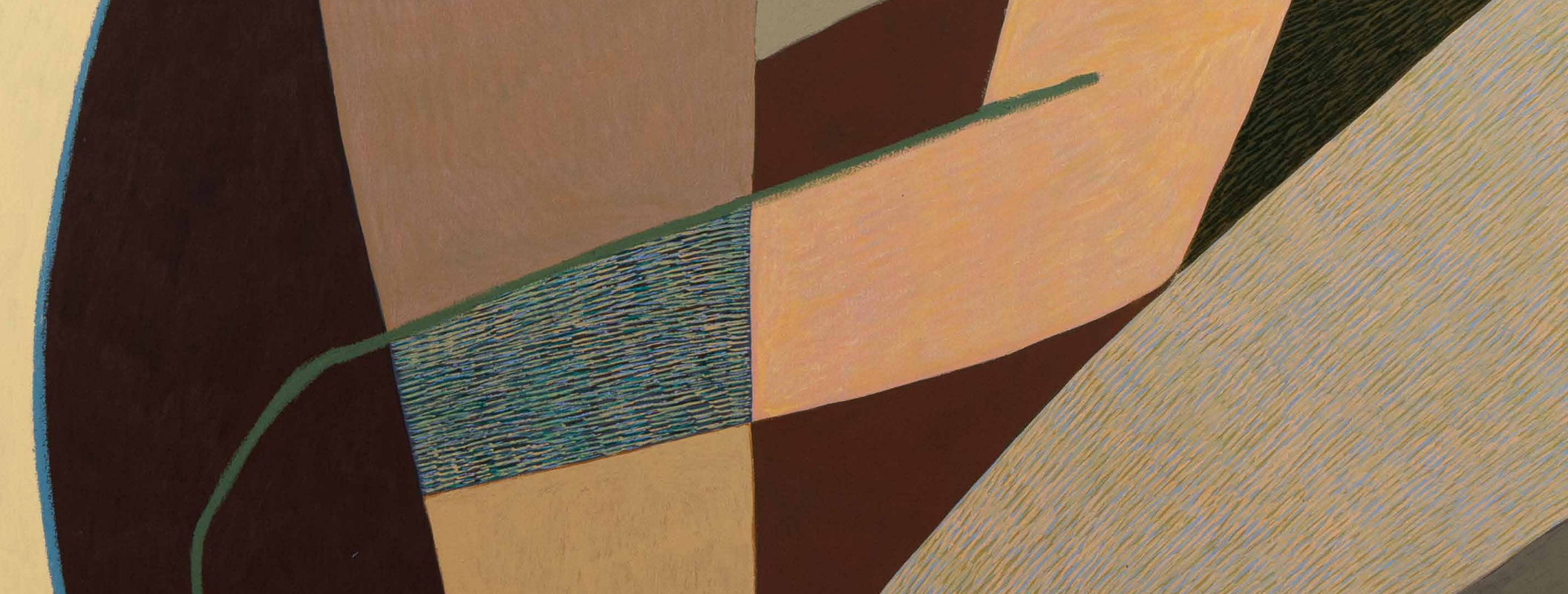


MICHAEL REID

S . H I G H L A N D S



Clare Dubina

The Gentle Wild

In *The Gentle Wild*, elongated forms curve and gather across the canvas in compositions that feel at once architectural and deeply intimate. Bodies emerge through arcs, weighted planes and fine accumulations of line, held within a palette of ochres, olive greens, softened creams and cooling blues.

Clare Dubina's background in fashion and printmaking remains legible in the assured structure of the work. Her surfaces possess a graphic clarity, yet close looking reveals extraordinary sensitivity of touch: dense passages of oil pastel and ink soften the geometry of the compositions, allowing the paintings to retain a sense of warmth and atmosphere beneath their compositional control.

Since relocating to the country, a quieter register has entered the artist's work. Wide open space and the subdued rhythms of the natural world seem to permeate the paintings indirectly, shaping their tonal atmosphere and emotional cadence. Cooler hues, drawn from lichen, fallen feathers glimpsed on walks, and the vast expanse of the sky, thread through the earthier colours that have long anchored Dubina's practice.

INTRODUCTION. 3

ARTWORKS. 5 - 11

Reverie
Harmony
Serenity
Quietude

ARTIST STATEMENT. 13

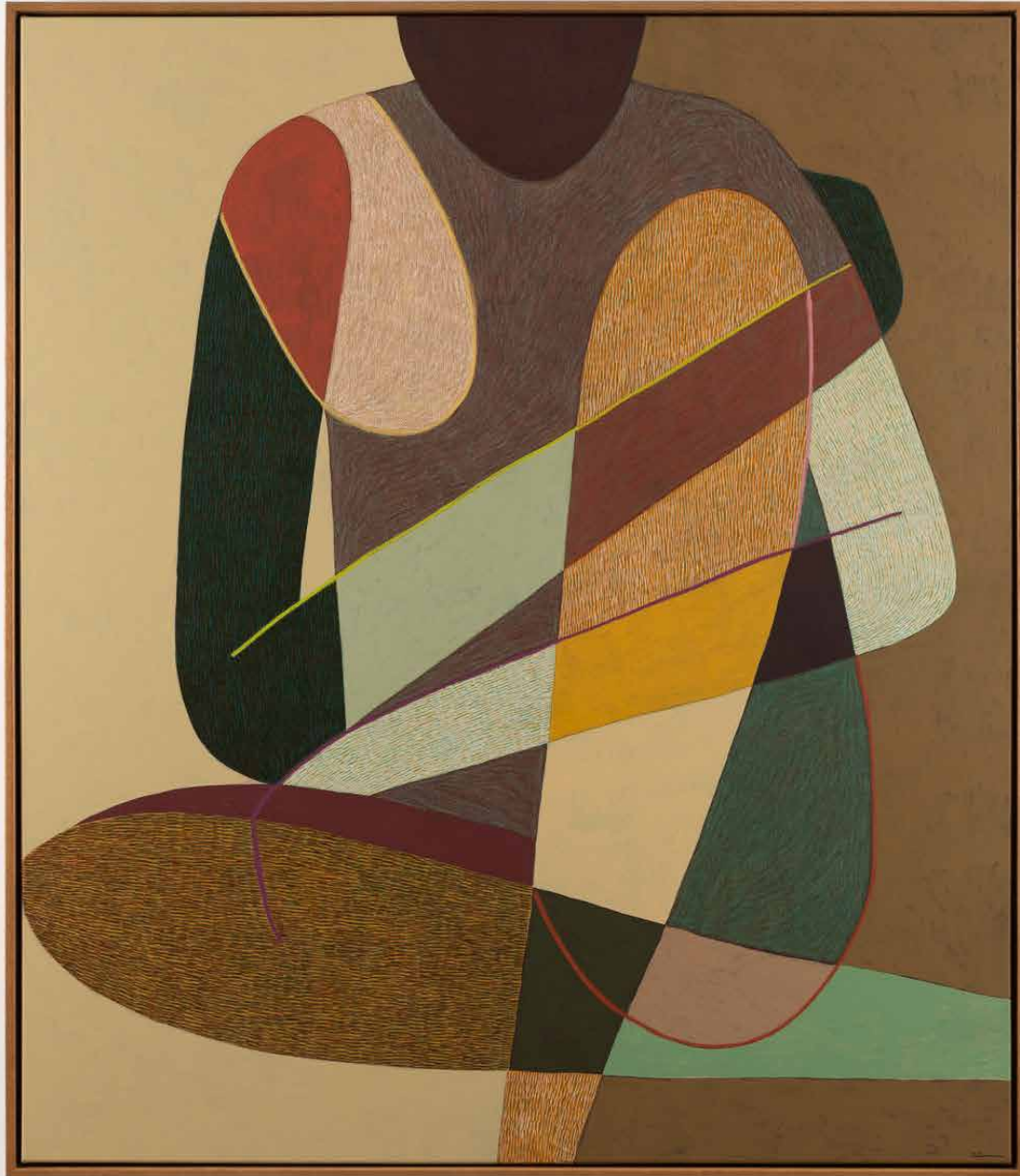
GALLERY CONTACT 14





Clare Dubina
Reverie 2026
acrylic, ink & oil pastel on canvas
100 x 100 cm
native mahogany frame
\$4,100



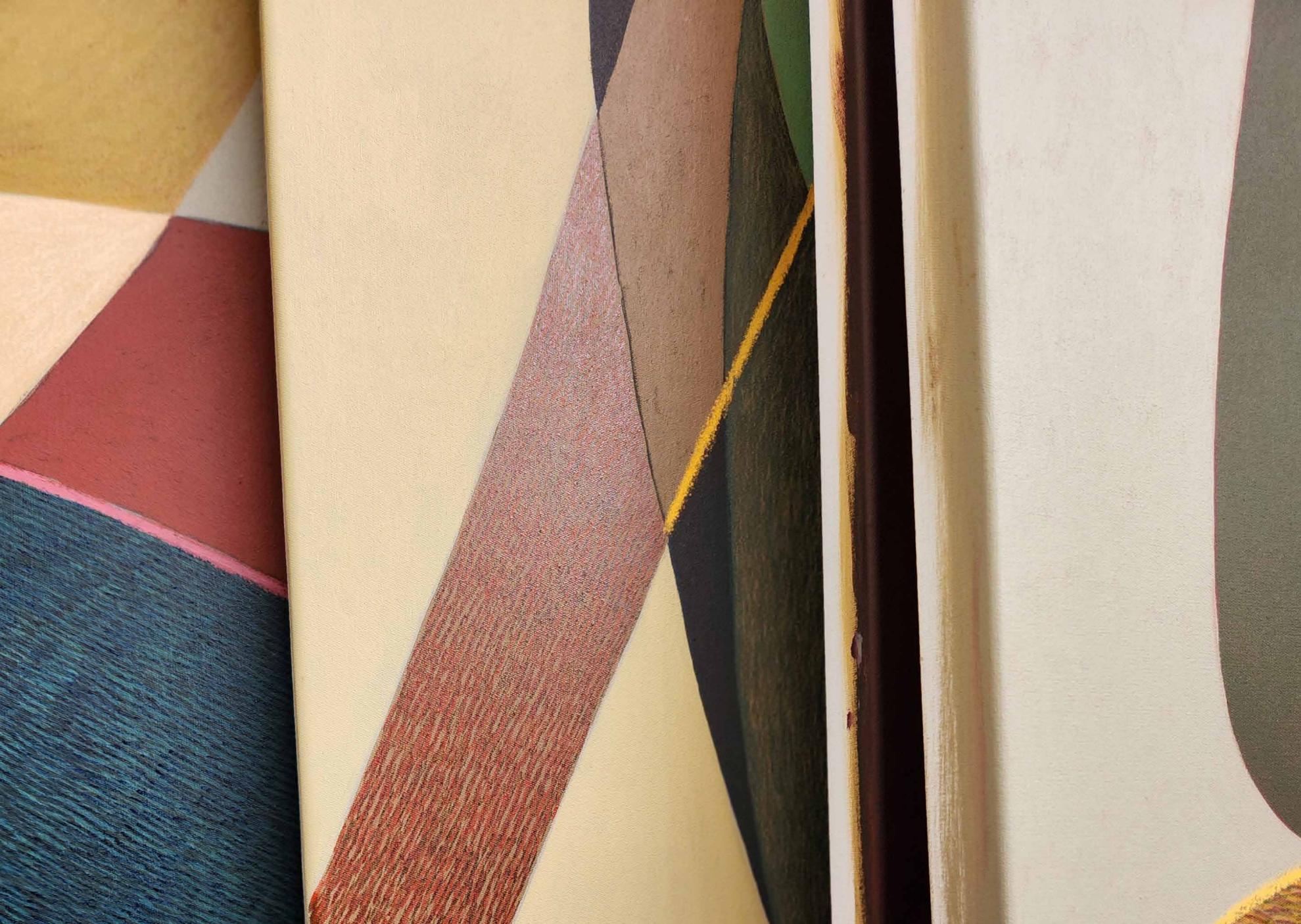


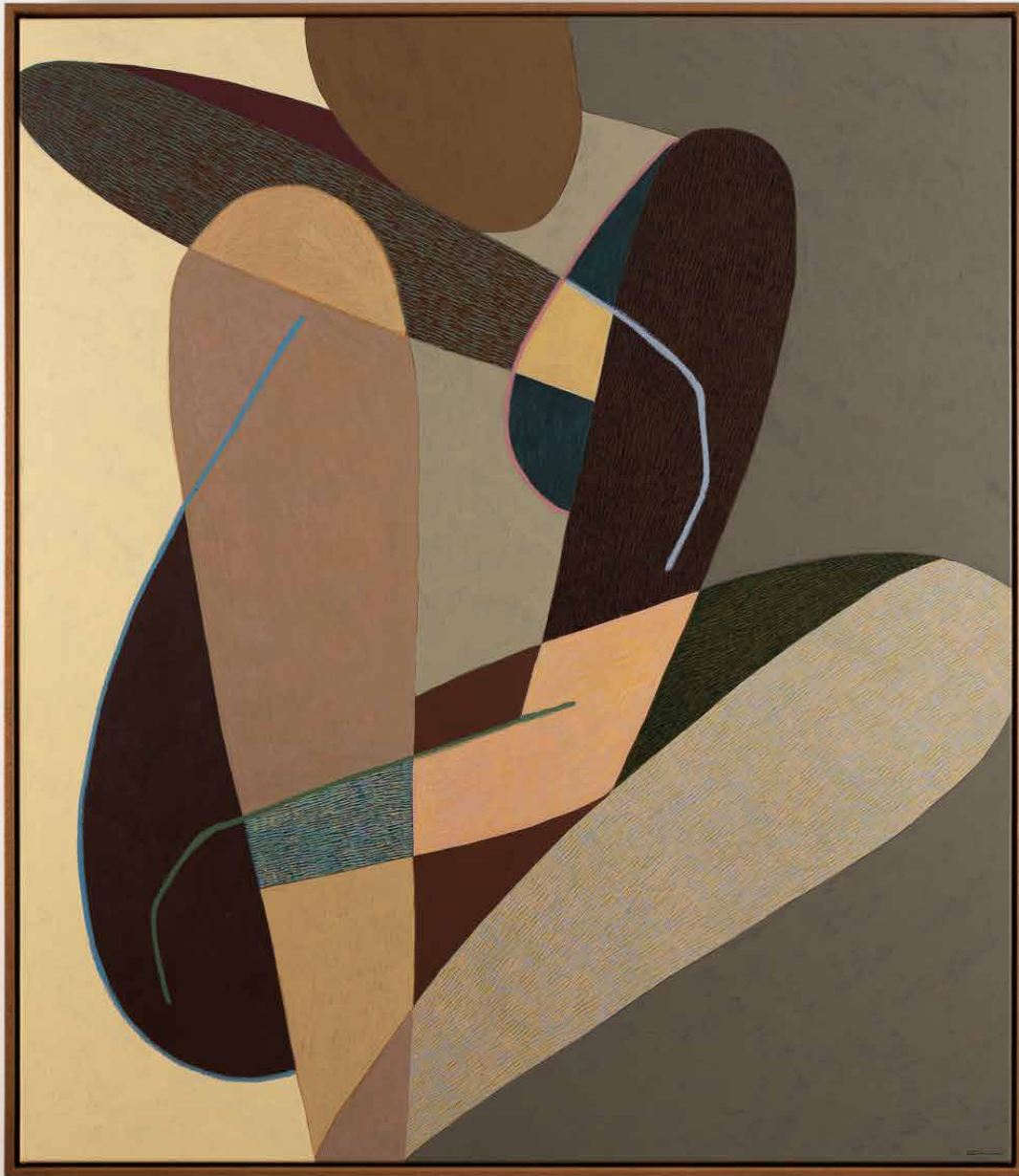
Clare Dubina
Harmony 2026
acrylic, ink & oil pastel on canvas
100 x 120 cm
native mahogany frame
\$4,500





Clare Dubina
Serenity 2026
acrylic, ink & oil pastel on canvas
100 x 100 cm
native mahogany frame
\$4,100





Clare Dubina
Quietude 2026
acrylic, ink & oil pastel on canvas
100 x 120 cm
native mahogany frame
\$4,500



“

The Gentle Wild - a space where the body can soften, and the self can exist without weight.

In this collection, nature is not depicted directly, and the figures are not intended as individual portraits, but as expressions of interior states, where form becomes a language for feeling.

Since moving to the country, I have become increasingly attuned to the way shifting light, open space, and the subdued rhythms of the natural world influence emotional states. I have always gravitated towards earth tones aesthetically, but within this new chapter they feel more lived-in by reflecting a sense of softness, grounding, and restoration that carries through the work and my way of being. Cooler tones have also begun to emerge, drawn from the sky and the quiet, subtle colours noticed on my walks from feathers, lichen, and the fading light.

Moving between areas of layered acrylic flatness, flecks of ink, and textured oil pastels, I aim to create a sense of atmosphere and tactility.

~

Clare Dubina

MICHAEL REID

S . H I G H L A N D S

11b Old Hume Highway

Berrima NSW 2577

+61 (02) 8353 3535

southernhighlands@michaelreid.com.au

Monday - Saturday 10am - 5pm

Sunday 10am - 4pm

Michael Reid Southern Highlands acknowledges the Gundungurra and Tharawal people as the Traditional Custodians of the area now known as The Southern Highlands. We pay our respect to Indigenous Elders past, present and emerging.