

MICHAEL REID

SYDNEY

BERLIN

BEYOND



Carly Le Cerf



monhukudo 2
L. Le Cerf





Carly Le Cerf, CL0014. Acrylic, charcoal and oil pastel on paper, 19.5 x 24.3 cm, \$550



Carly Le Cerf, *CL0015*. Gouache and acrylic on paper, 11.3 x 42 cm, \$950



Carly Le Cerf, CL0016. Gouache and acrylic on paper, 15 x 39 cm, \$950



Carly Le Cerf, CL0017. Gouache and acrylic on paper, 13 x 39.3 cm, \$950



Carly Le Cerf, *CL0019*. Gouache and acrylic on paper, 19.8 x 49.4 cm, \$950



our collective future depends on being the invisible networks
between us and nature, the world beyond our human form



Where does the ancient tree end and you begin?? Are we all like conked. We
Strengthen our connection through shared stories.





From My Room (6) Cheela - brewing
storm - 18 March

stormy sunset





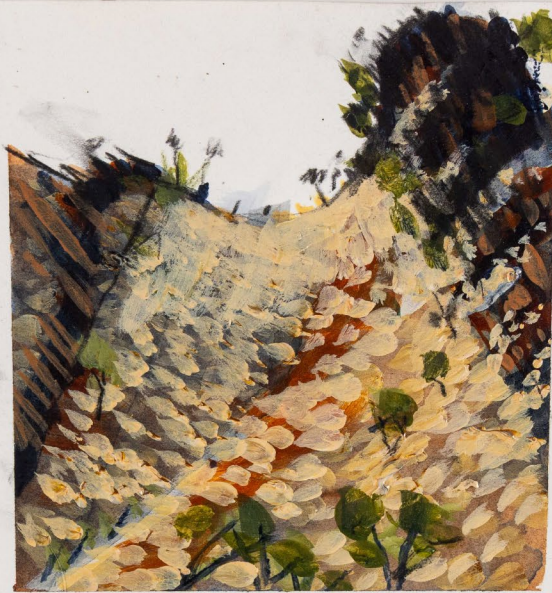
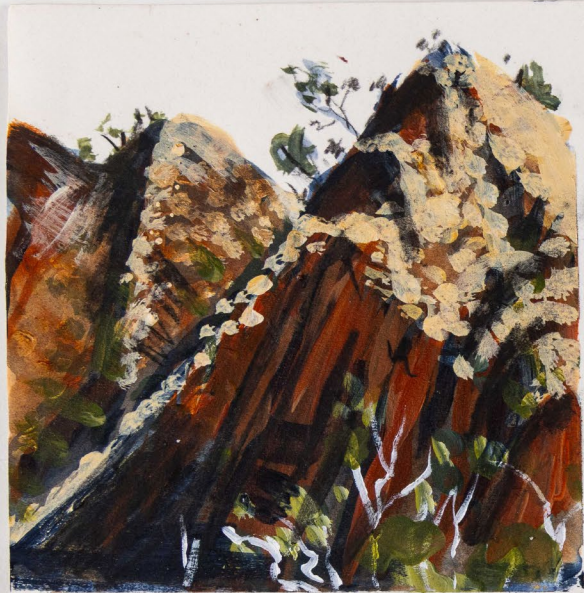
Carly Le Cerf, CL0027. Acrylic on paper, 29.8 x 39.6 cm, \$1,250



Carly Le Cerf, CL0028. Gouache, acrylic and charcoal on paper, 29.7 x 42 cm, \$1,250





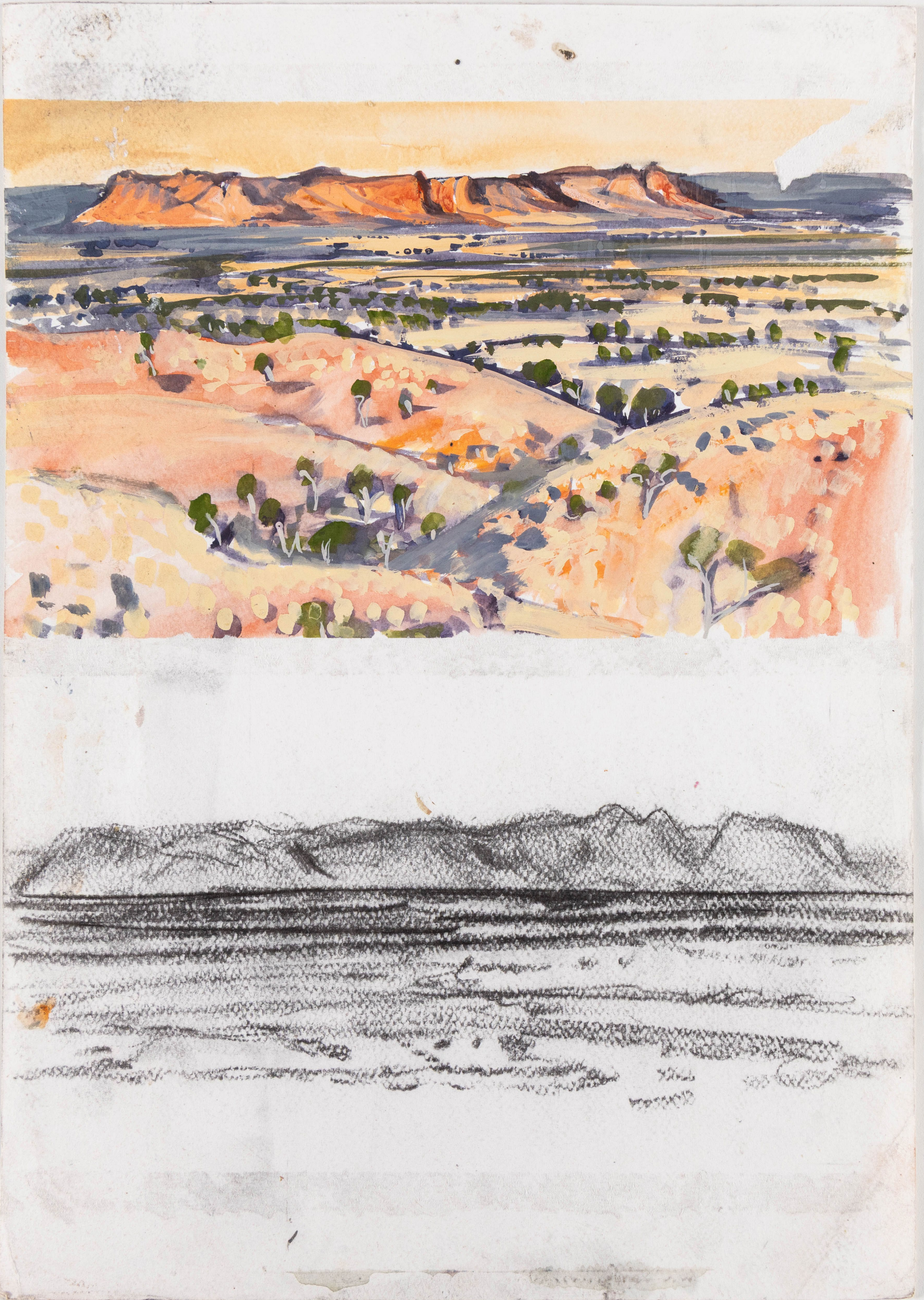




mesas @ 'Resilience' lookout
Paraburdo 15/1/24.



Redro Hill lookout
Paraburdo 15/1/24





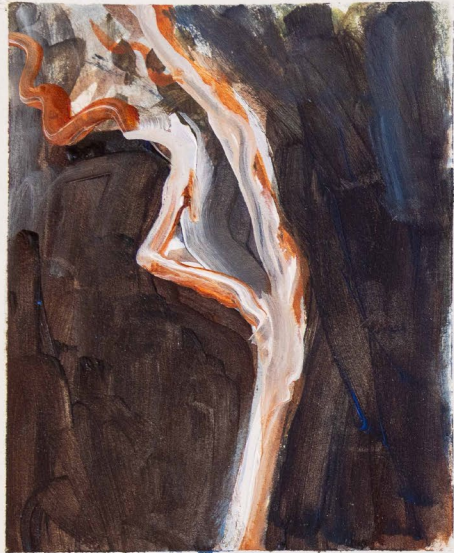




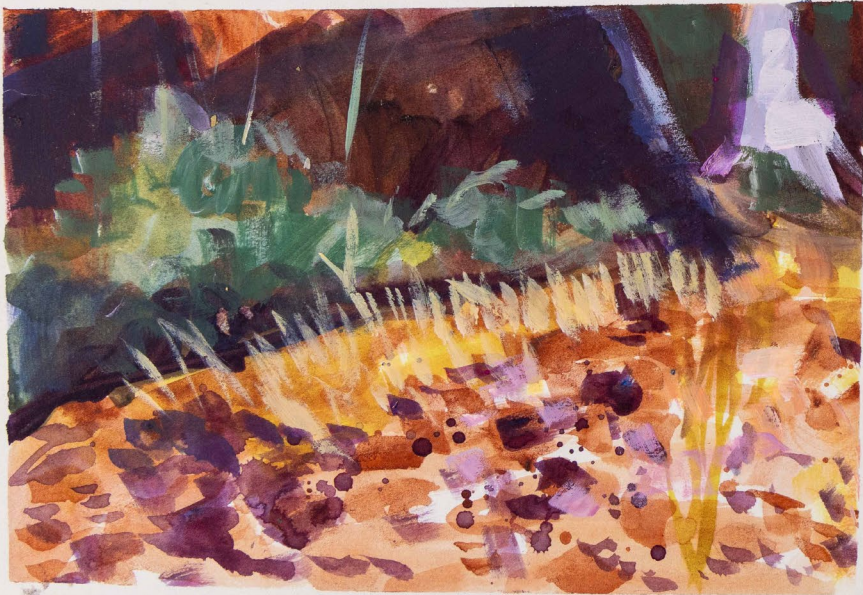
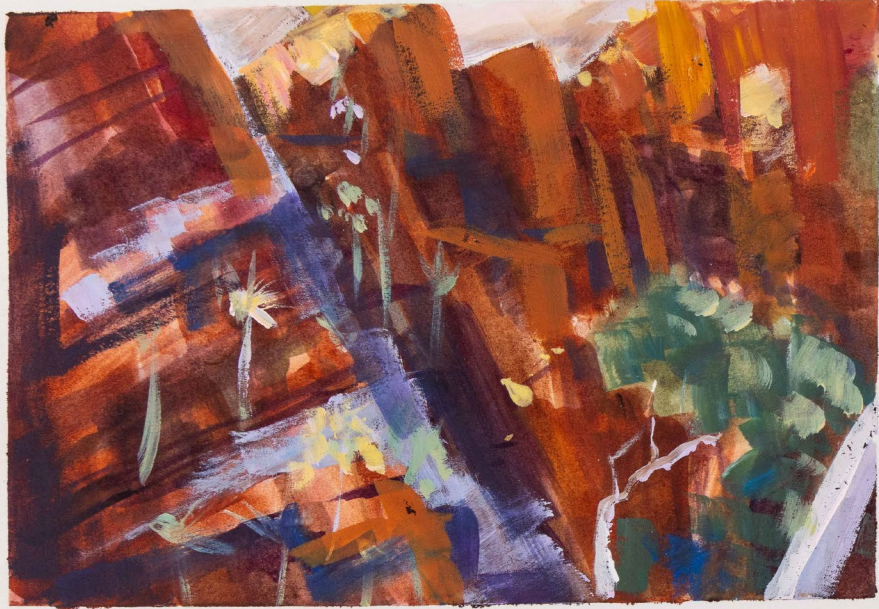
Carly Le Cerf, CL0040. Acrylic on paper, 29.7 x 42 cm, \$1,250

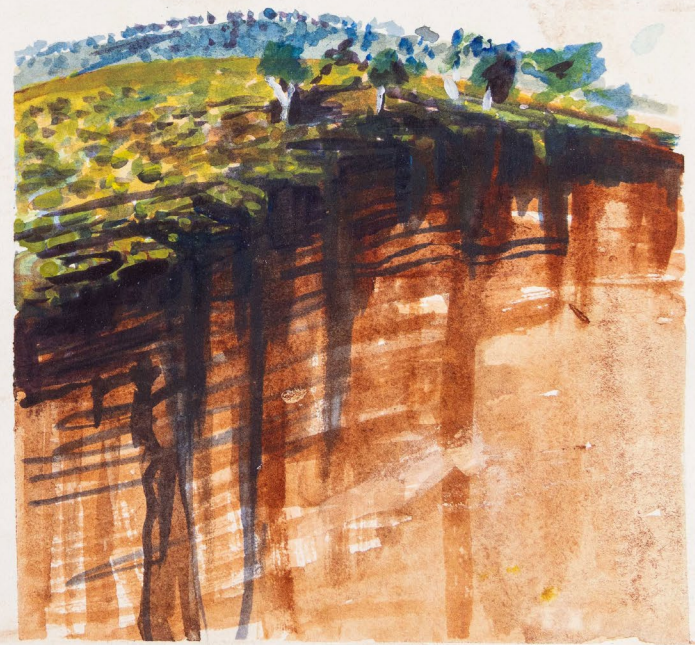


Carly Le Cerf, CL0041. Goache on paper, 29.7 x 42 cm, \$1,250













Gold.
large brush to pull wet paint hair/sally

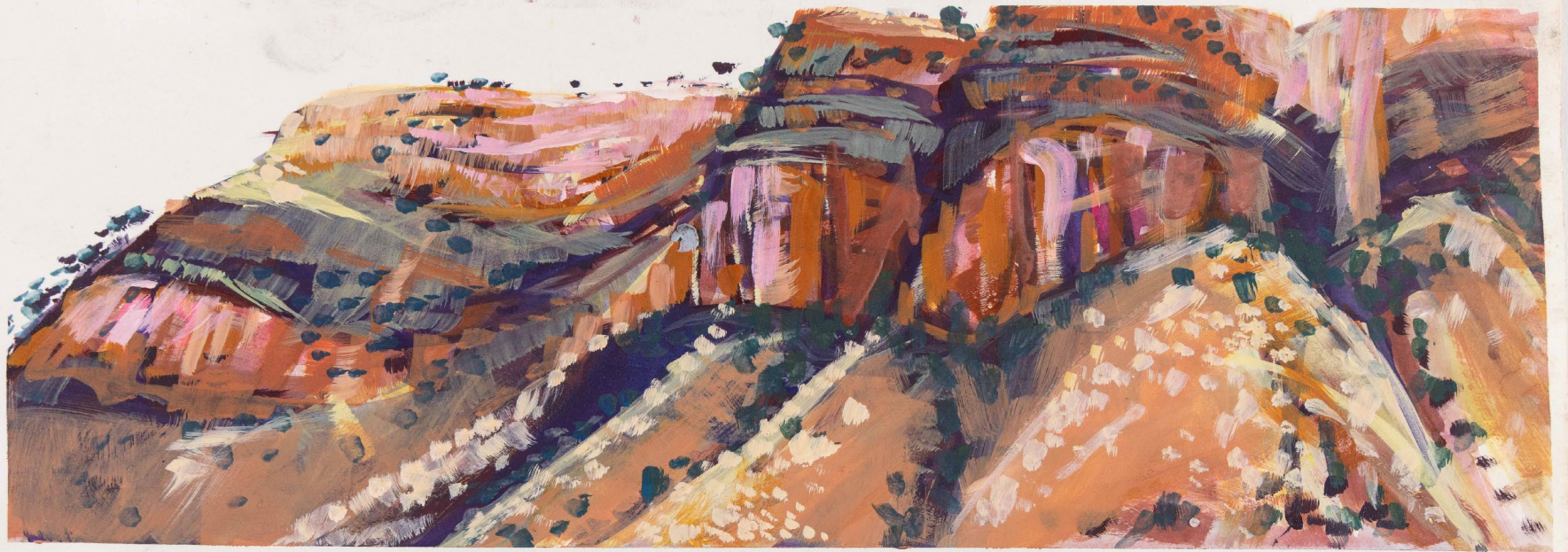


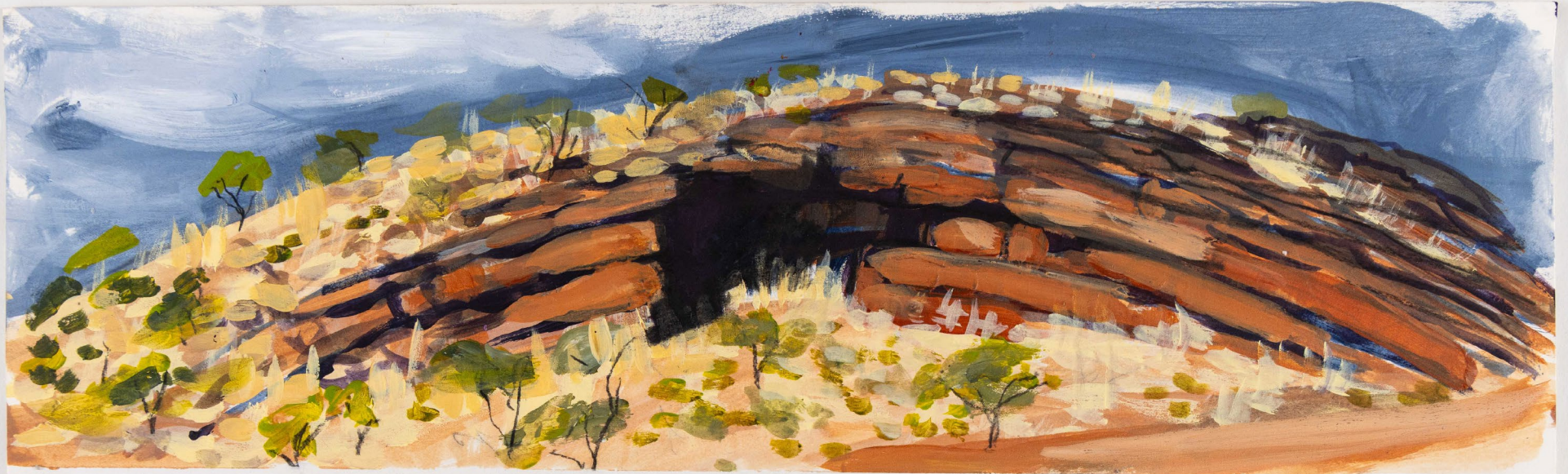
Champ Hill *Carly Le Cerf*



Carly Le Cerf, CL0051. Gouache on paper, 76 x 28 cm, \$1,250



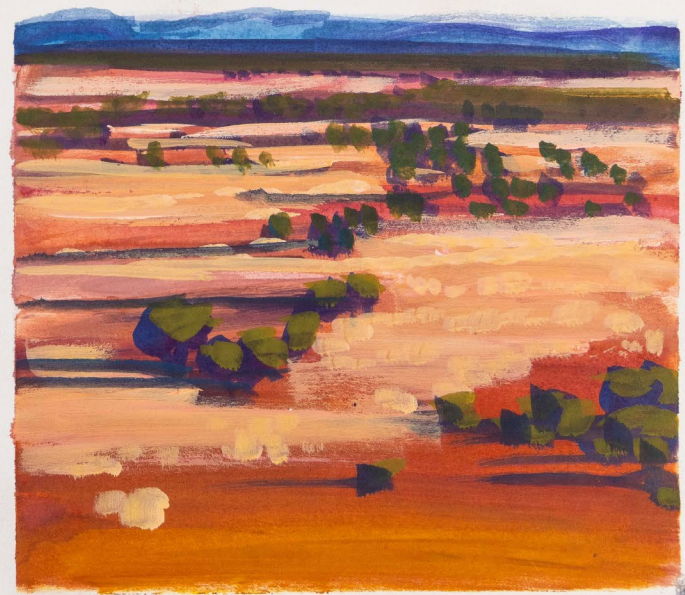


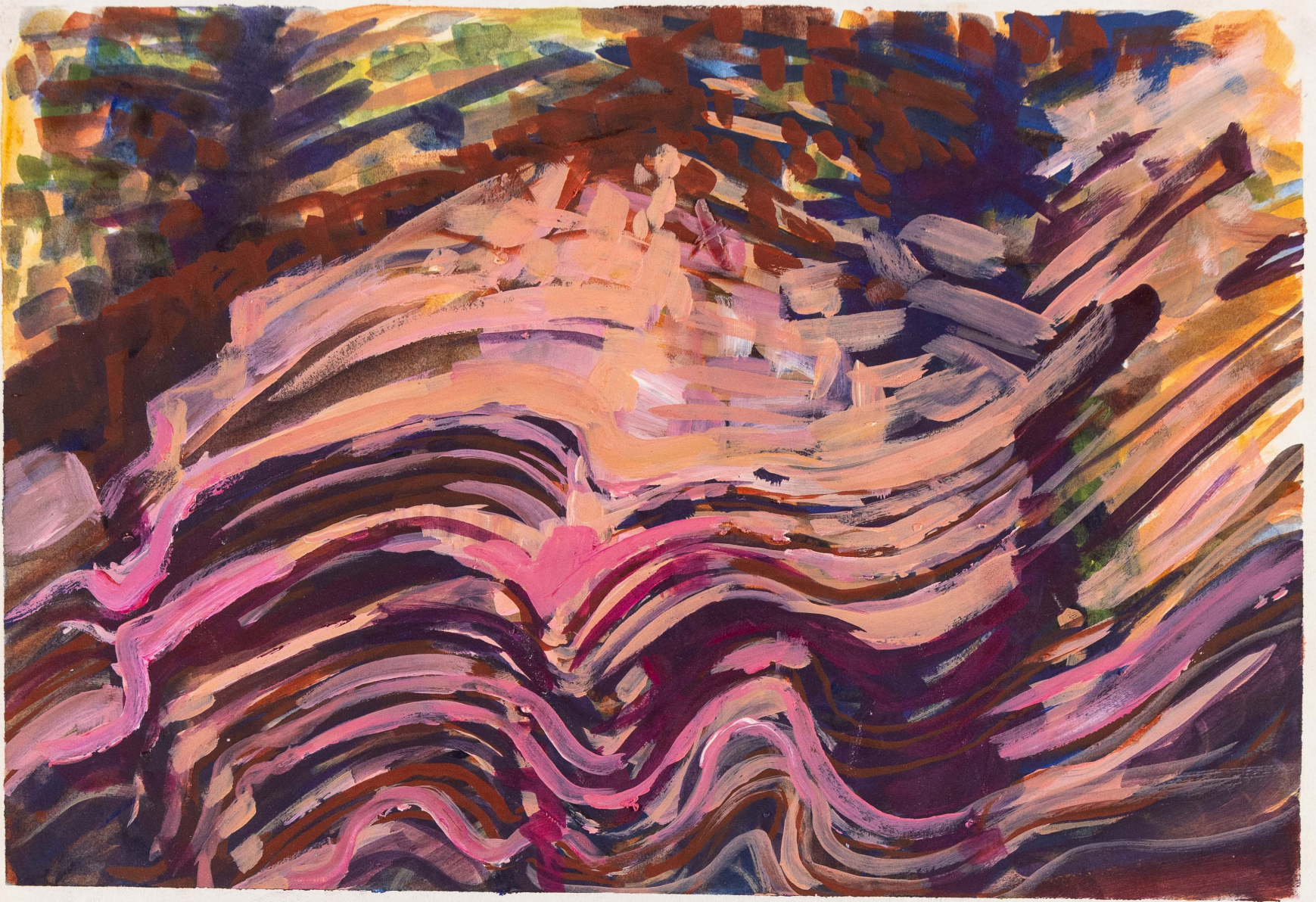


*The cave after the
dampow 1915*



The cave + rocks







Carly Le Cerf, CL0062. Gouache, acrylic and pencil on paper, 57 x 76 cm, \$2,450



Carly Le Cerf, CL0064. Gouache and acrylic on paper, 57 x 75.5 cm, \$2,450

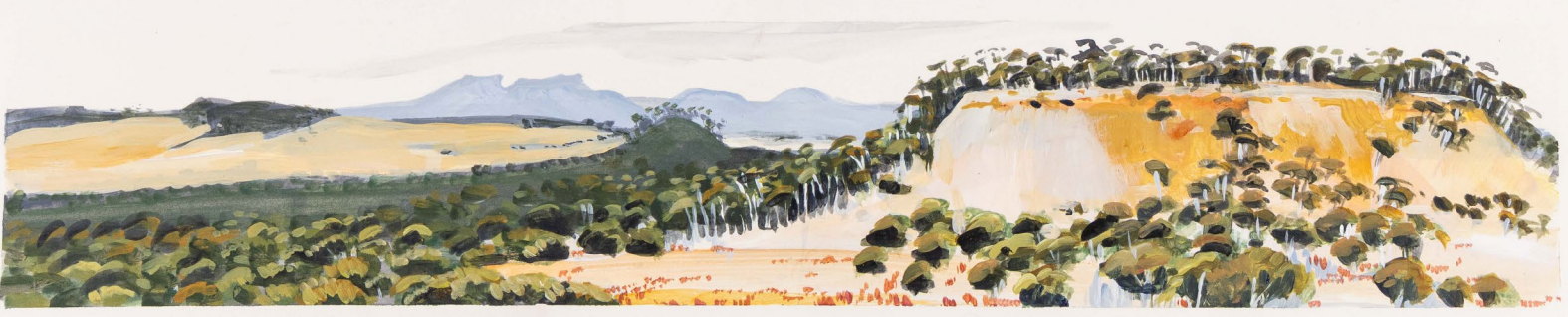
Archival
 Quaker
 Discreet
 Mountain Blue
 Peachy
 Mellet.
 Ancient
 Granite
 Shadows of
 Great cliffs



Happy Blue
 clay.
 Moss
 Green
 Stamp
 light
 Green
 light
 Peach
 Moss
 Ochre
 Crumbly.



Ineslona
 Cliff
 Misty
 Shavings



MICHAEL REID

SYDNEY

BERLIN

BEYOND

109 Shepherd Street
Chippendale NSW 2008
+61 (02) 8353 3500
danielsoma@michaelreid.com.au

Monday - Friday 11am - 5pm
Saturday 11am - 3pm

Michael Reid Sydney + Berlin acknowledge the Gadigal people as the traditional owners of the land on which our Eora / Sydney gallery stands. We pay our respects to Indigenous Elders past, present & emerging.